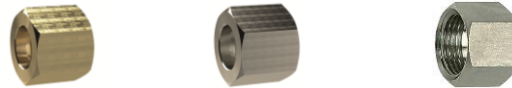


## Sechskant-Überwurfmutter



Gewinde	für Tülle LW	SW	Messing	Messing vernickelt	Edelstahl 1.4571	Edelstahl 1.4408
G 1/8	4 mm	14 mm	MS2341846	MSN2341846	-	-
G 1/4	4 mm	17 mm	MS2341446	MSN2341446	234 A-ES	-
G 1/4	9 mm	17 mm	MS2341409	MSN2341409	234 A/S-ES	-
G 3/8	4 mm	19 mm	MS23438469	MSN23438469	234 B-ES	-
G 1/2	6 mm	24 mm	MS2341269	MSN2341269	234 C-ES	-
G 1/2	13 mm	24 mm	MS2341213	MSN2341213	234 C/S-ES	-
G 3/4	19 mm	32 mm	MS2343419	MSN2343419	234 C/M-ES	-
G 1	19 mm	38 mm	MS234119	MSN234119	-	-
G 1	25 mm	38 mm	MS234125	MSN234125	234 C/N-ES	-