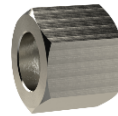


Schlauchtülle MS			passende Überwurfmuttern MS		passende Überwurfmuttern MS Linksgewinde	
Artikel Nr.	Typen Nr.	LW Schlauch	Artikel Nr.	Typen Nr.	Artikel Nr.	Typen Nr.
134835	MS2361804	LW 4	=	137525	MS2341846	
134842	MS2361806	LW 6	=	137525	MS2341846	
133997	MS2361404	LW 4	=	137526	MS2341446	137630 MS234LH1446
133998	MS2361406	LW 6	=	137526	MS2341446	137630 MS234LH1446
134003	MS2361409	LW 9	=	137527	MS2341409	
134006	MS2363804	LW 4	=	137528	MS23438469	137631 MS234LH38469
134895	MS2363806	LW 6	=	137528	MS23438469	137631 MS234LH38469
134902	MS2363809	LW 9	=	137528	MS23438469	137631 MS234LH38469
137522	MS2361206	LW 6	=	137529	MS2341269	
136301	MS2361208	LW 8	=	137529	MS2341269	
137523	MS2361209	LW 9	=	137529	MS2341269	
136302	MS2361210	LW 10	=	137529	MS2341269	
136303	MS2361212	LW 12	=	137530	MS2341213	
137524	MS2361213	LW 13	=	137530	MS2341213	136311 MS234LH1213
136304	MS2363413	LW 13	=	136309	MS2343419	
136305	MS2363419	LW 19	=	136309	MS2343419	
136306	MS236119	LW 19	=	136310	MS234119	
136307	MS236125	LW 25	=	136311	MS234125	

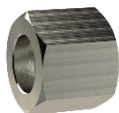


Überwurfmutter MS			passende Schlauchtüllen MS							
Artikel Nr.	Typen Nr.	Gewinde	Artikel Nr.	Typen Nr.	Artikel Nr.	Typen Nr.	Artikel Nr.	Typen Nr.		
137525	MS2341846	G 1/8	=	134835	MS2361804	134842	MS2361806			
137526	MS2341446	G 1/4	=	134835	MS2361404	134842	MS2361406			
137527	MS2341409	G 1/4	=	134003	MS2361409					
137528	MS23438469	G 3/8	=	134006	MS2363804	134895	MS2363806	134902 MS2363809		
137529	MS2341269	G 1/2	=	137522	MS2361206	136301	MS2361208	137523 MS2361209		
137530	MS2341213	G 1/2	=	136303	MS2361212	137524	MS2361213	136302 MS2361210		
136309	MS2343419	G 3/4	=	136305	MS2363419					
136310	MS234119	G 1	=	136305	MS236119					
136311	MS234125	G 1	=	136307	MS236125					
137630	MS234LH1446	G 1/4 links	=	134835	MS2361404	134842	MS2361406			
137631	MS234LH38469	G 3/8 links	=	134006	MS2363804	134895	MS2363806	134902 MS2363809		
136311	MS234LH1213	G 1/2 links	=	136303	MS2361212	137524	MS2361213			



Schlauchtülle MSN		
Artikel Nr.	Typen Nr.	LW Schlauch
136654	MSN2361804	LW 4
136655	MSN2361806	LW 6
136656	MSN2361404	LW 4
136657	MSN2361406	LW 6
136658	MSN2361409	LW 9
136659	MSN2363804	LW 4
136660	MSN2363806	LW 6
136661	MSN2363809	LW 9
136662	MSN2361206	LW 6
136663	MSN2361208	LW 8
136664	MSN2361209	LW 9
136665	MSN2361210	LW 10
136666	MSN2361212	LW 12
136667	MSN2361213	LW 13
136668	MSN2363413	LW 13
136669	MSN2363419	LW 19
136670	MSN236119	LW 19
136671	MSN236125	LW 25

passende Überwurfmuttern MSN	
Artikel Nr.	Typen Nr.
= 138488	MSN2341846
= 138488	MSN2341846
= 138489	MSN2341446
= 138489	MSN2341446
= 138490	MSN2341409
= 138491	MSN23438469
= 138491	MSN23438469
= 138491	MSN23438469
= 136672	MSN2341269
= 136672	MSN2341269
= 136672	MSN2341269
= 136672	MSN2341269
= 136673	MSN2341213
= 136673	MSN2341213
= 136675	MSN2343419
= 136675	MSN2343419
= 136676	MSN234119
= 136677	MSN234125



Überwurfmutter MSN		
Artikel Nr.	Typen Nr.	Gewinde
138488	MSN2341846	G 1/8
138489	MSN2341446	G 1/4
138490	MSN2341409	G 1/4
138491	MSN23438469	G 3/8
136672	MSN2341269	G 1/2
136673	MSN2341213	G 1/2
136675	MSN2343419	G 3/4
136676	MSN234119	G 1
136677	MSN234125	G 1

passende Schlauchtüllen MSN					
Artikel Nr.	Typen Nr.	Artikel Nr.	Typen Nr.	Artikel Nr.	Typen Nr.
= 136654	MSN2361804	136655	MSN2361806		
= 136656	MSN2361404	136657	MSN2361406		
= 136658	MSN2361409				
= 136659	MSN2363804	136660	MSN2363806	136661	MSN2363809
= 136662	MSN2361206	136663	MSN2361208	136664	MSN2361209
= 136665	MSN2361210	136666	MSN2361212	136667	MSN2361213
= 136668	MSN2363413	136669	MSN2363419		
= 136670	MSN236119				
= 136671	MSN236125				